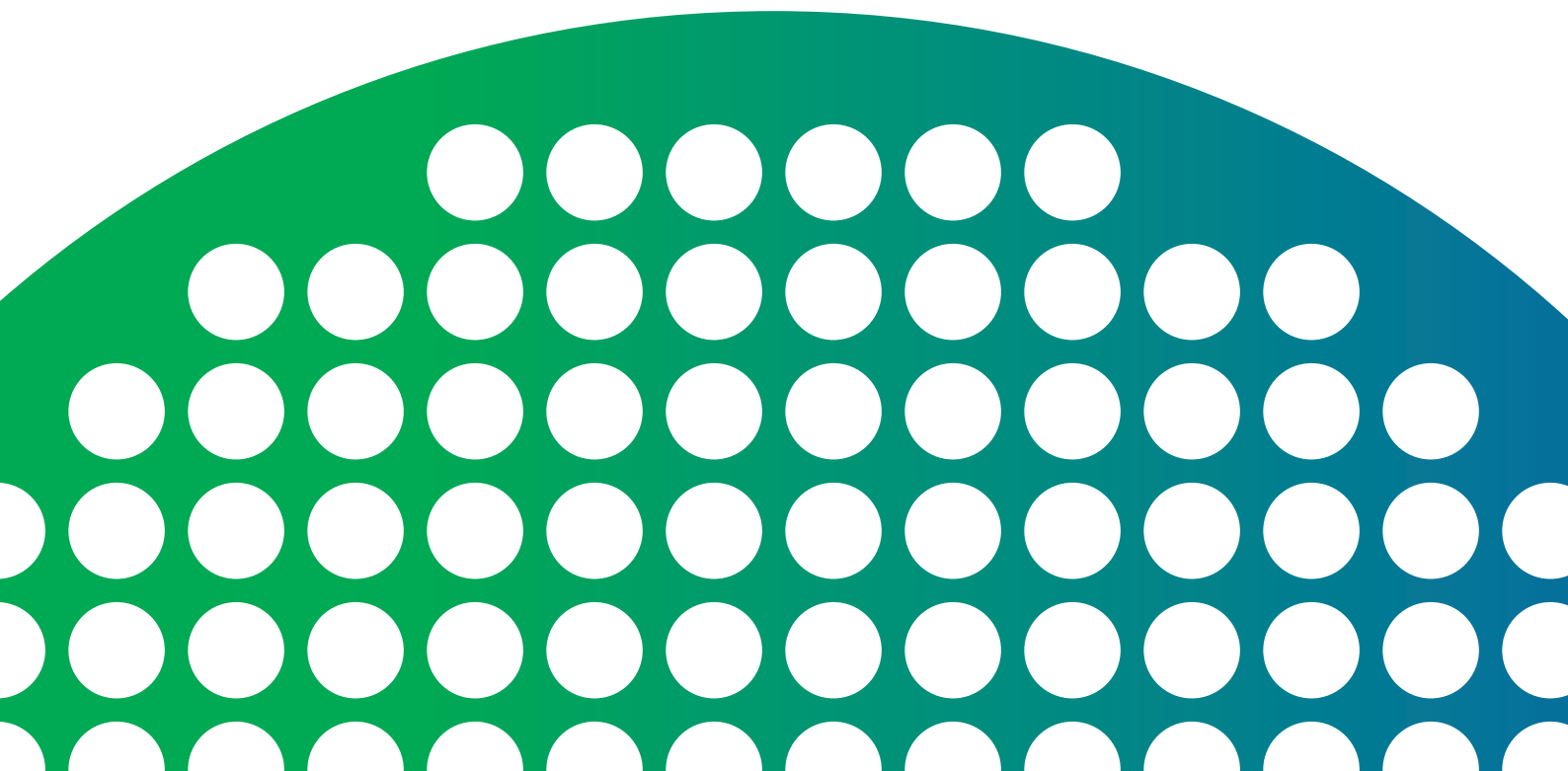




Shell & Tube Heat Exchangers

FOR HIGH PRESSURE HYDROGEN APPLICATION



Type F

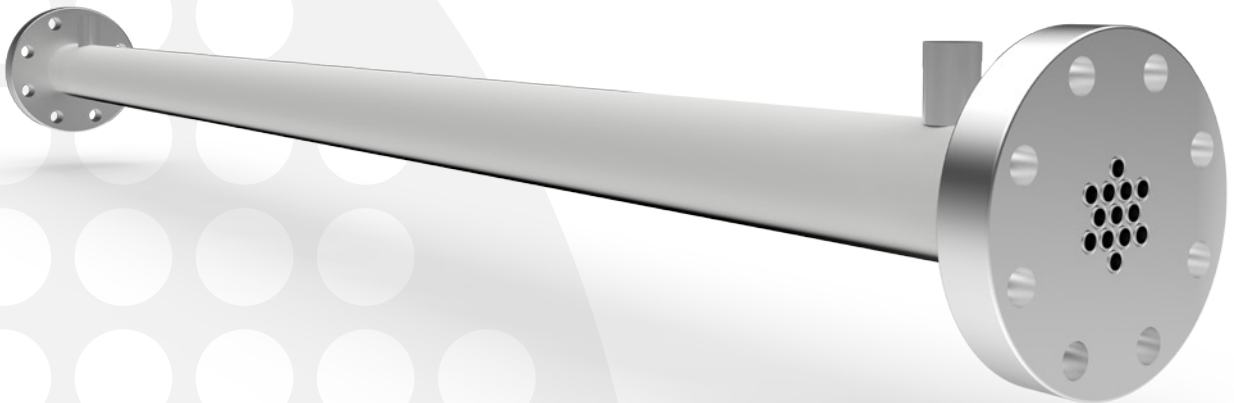
Flanged on-line installation (max up to 240barg SS or 360barg CS).

Type W

Welded integral covers for piping/tubing connection to process.

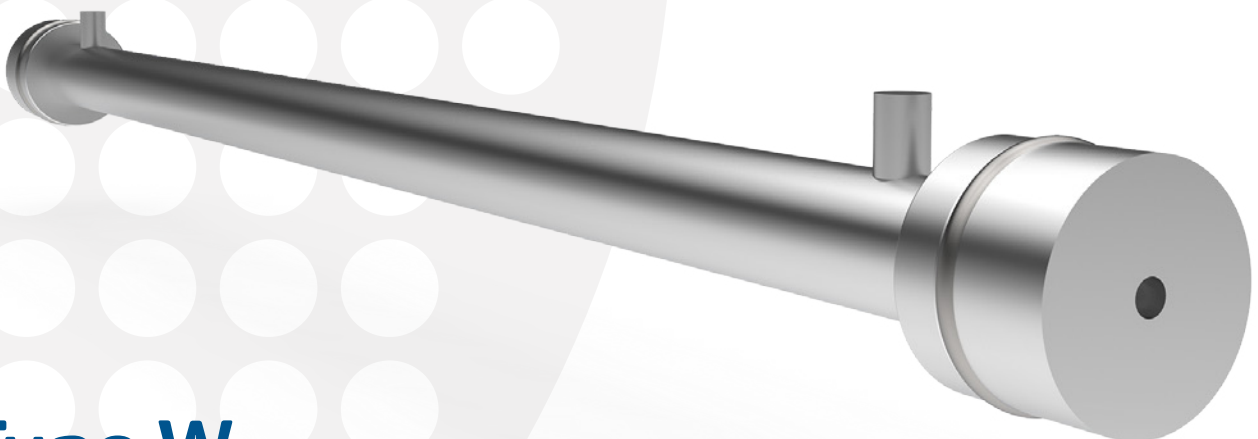
Type C

Clamped removable covers for easy installation and maintenance.



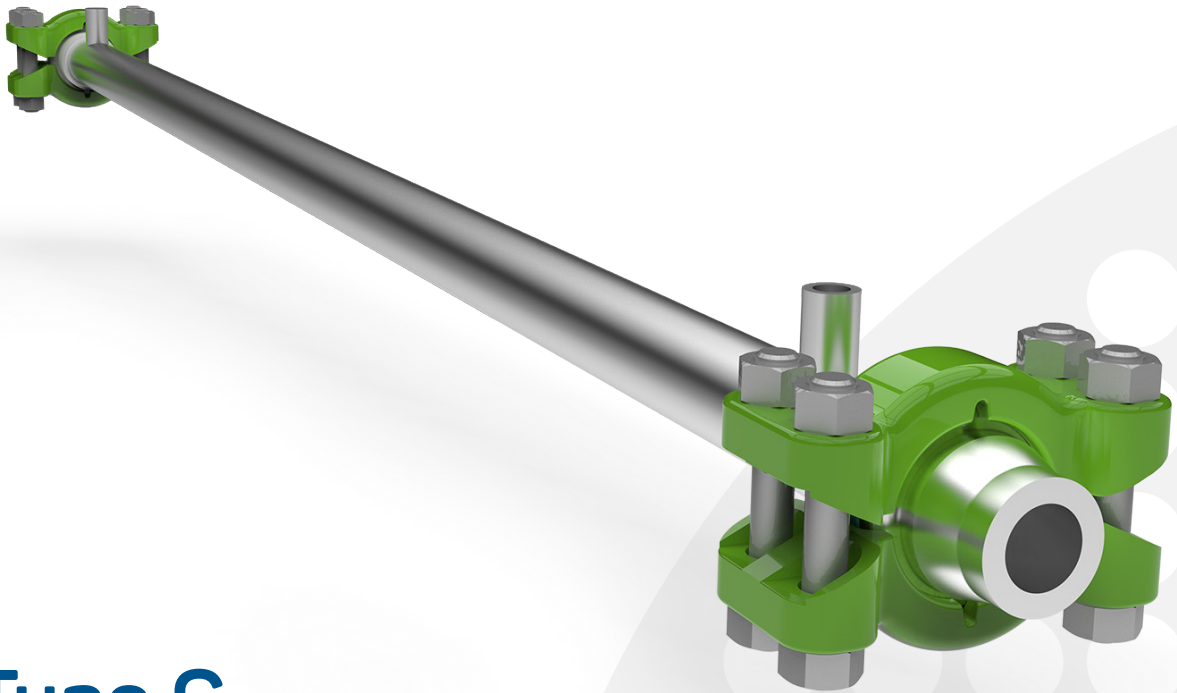
Type F

Flanged on line installation (max up to 240barg SS or 360barg CS).



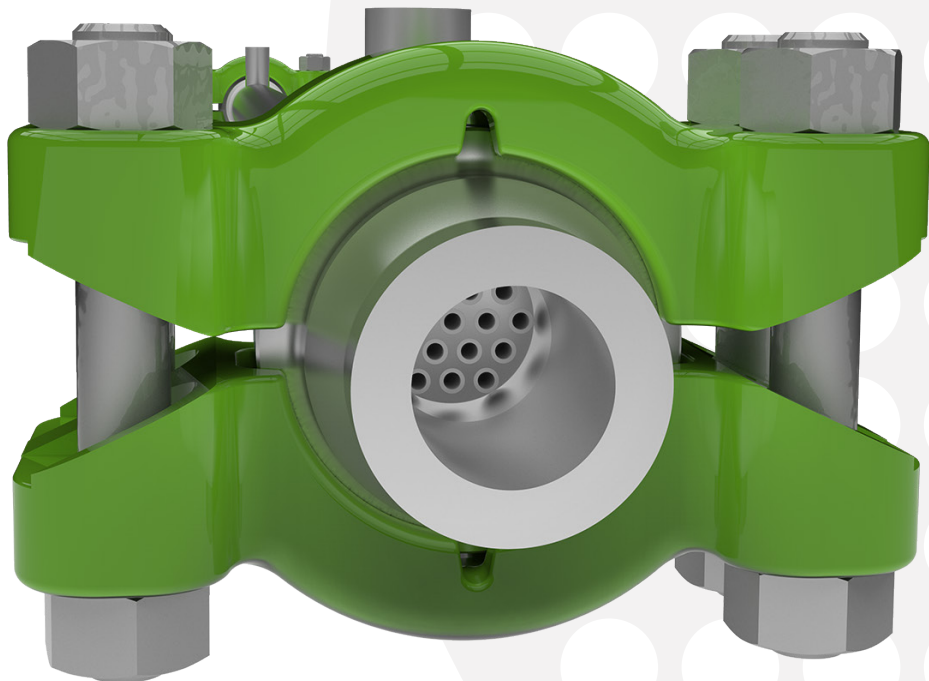
Type W

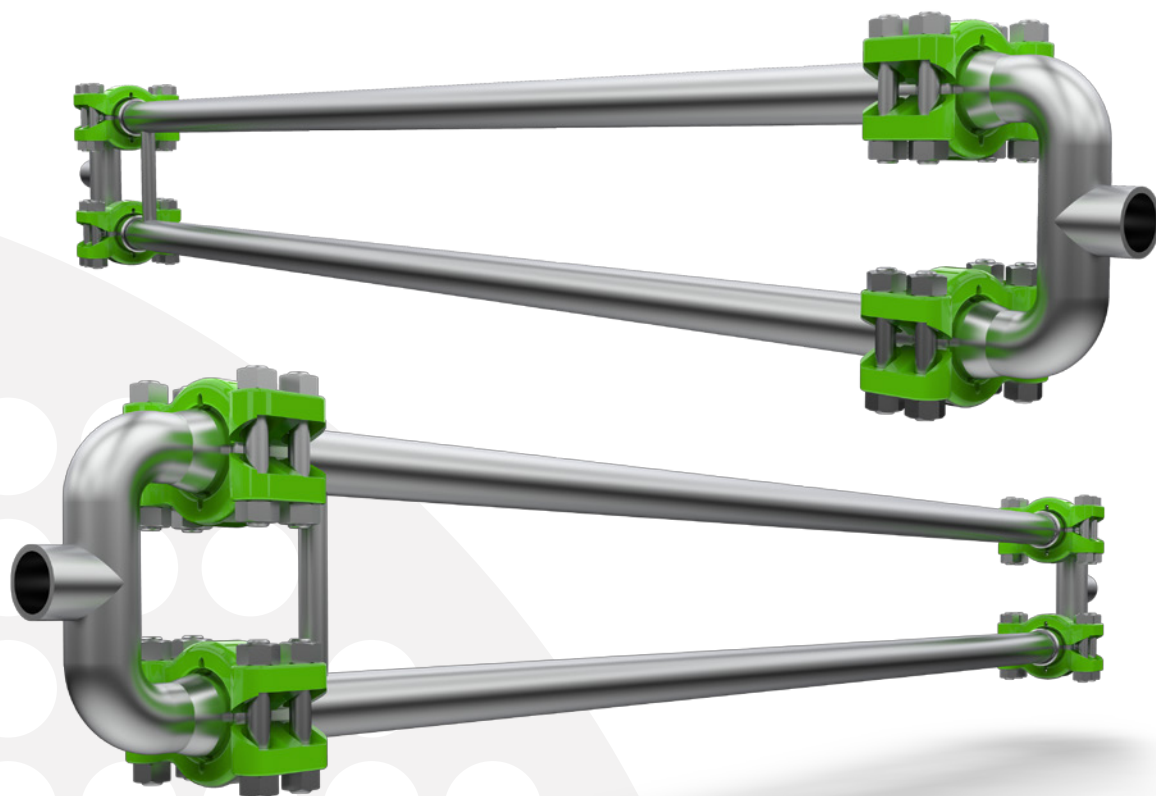
Welded integral covers for piping/tubing connection to process.



Type C

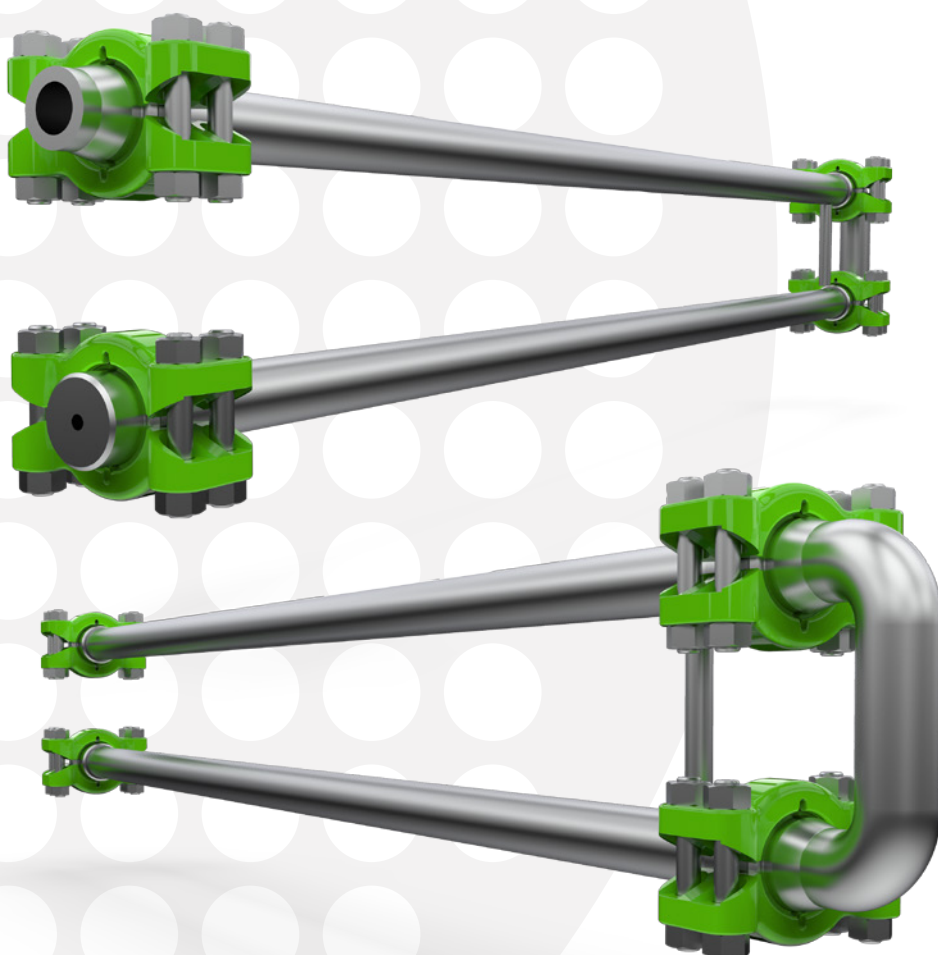
Clamped removable covers for easy installation and maintenance.





Type C/P

Easy to connect more elements in parallel depending on working process conditions.

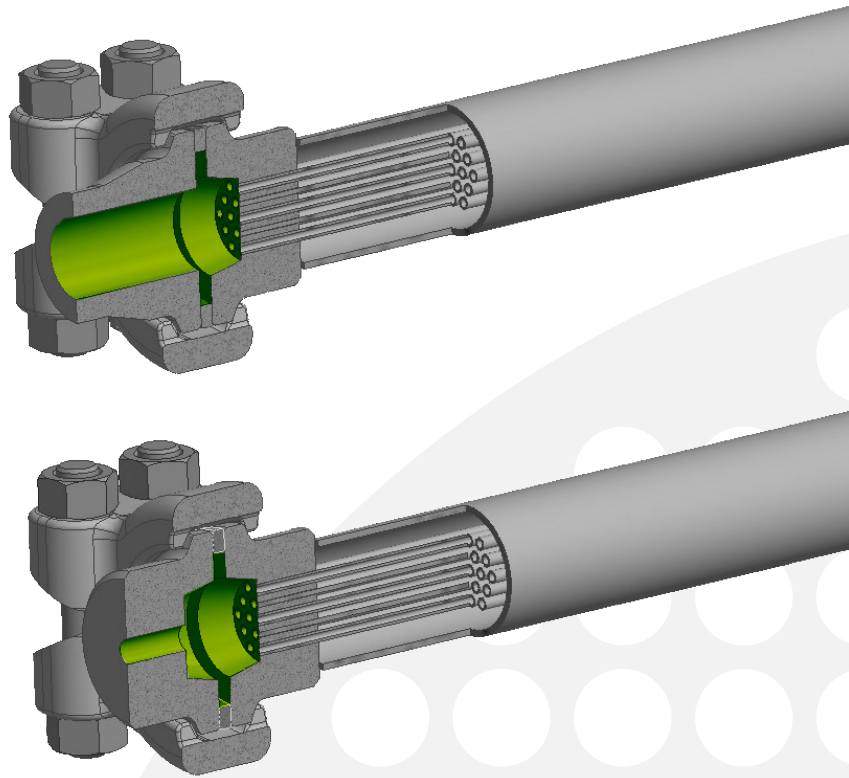


Type C/S

Easy to connect more elements in series depending on working process conditions.

Type C

Counter hub suitable for butt weld on piping or threader high pressure fitting installation.



FEATURES

- Construction materials all parts in contact with fluids 316L Stainless Steel.
- Pressure design up to 800barg and temperature design up to 300°C.
- Hydrogen flow from 50kg/hr up to 500kg/hr (depending on cooler type).
- Thermal calculation performed by HTRI software to optimize selection.
- Mechanical stress calculation according to codes ASME VIII or EN 13445.
- Customized design for each process and installation on package needs.
- Suitable for in series or in parallel installation as per process conditions.
- ASME U-Stamp and PED 2014/68/EU verification and certification available.
- Additional certifications according to final destination available on request.



TIT tube in tube

For small flow with high working and design pressure alternative solution is tube-in-tube cooler.

- Fixed or floating construction as per design conditions according to ASME VIII or EN 13445.
- Flanged ends for direct connection to process piping or customized ends suitable for fitting installation for extreme high design pressure (up to 1000barg).



SSP
single spiral pipe

MSP
multi spiral pipe

Fully customizable size and design.
For small flow with high working
and design pressure for compact
solution on small packages.

- Up to 6 meters linear length
single or multiple pipe-in-pipe
in single piece.
- Flanged ends for direct
connection to process piping
or customized ends suitable
for fitting installation for
extreme high design pressure
(up to 1000barg).
- Very compact design
available in different sizes and
configurations for easy
installation on packages.





FLOVEX SRL - Via Abruzzi, 4/6
20056 GREZZAGO (MI) - Italy
+39 02 920192.1
flo@flovex.it
www.flovex.it